
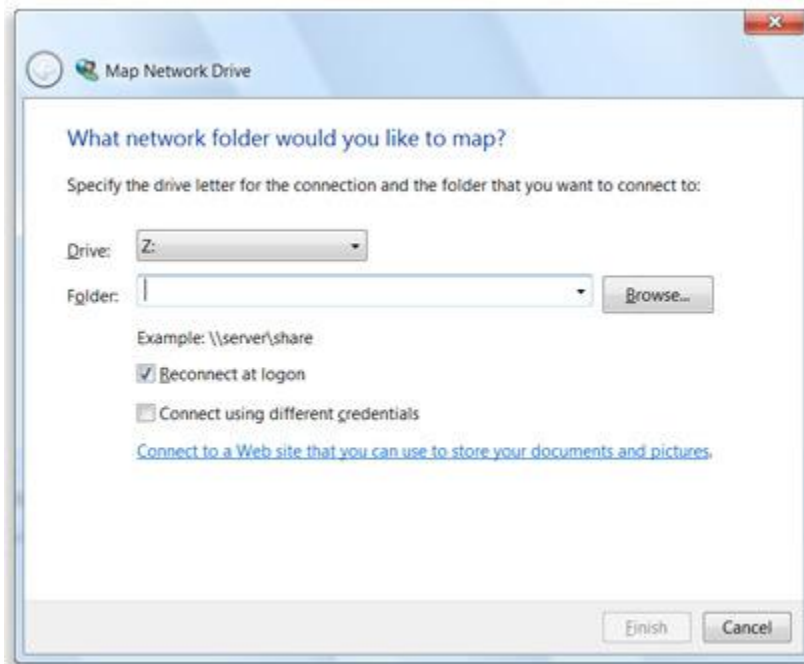


Map H or Y drive in the Library or GP Labs or with your Laptop.

Windows 7/Vista

1. Open Computer by clicking the **Start** button , and then clicking **Computer**.
2. Click **Map network drive**.



The Map Network Drive dialog box

3. In the **Drive** list, click a drive letter.
You can choose any available letter.
4. In the **Folder** box, type the path of the folder or computer.

H Drive is located at \\bizserv2\students\C#####

Y Drive is located at \\bizserv8\labdatashares

To connect every time you log on to your computer, select the **Reconnect at logon** check box.

If you are using your **Laptop**, click on Connect using different credentials. When prompted for a username and password, use STUDENT\C# for the username and the password you use to log onto the computers at Camosun for the password.

5. Click **Finish**.

Your computer is now connected, or *mapped*, to the network drive.